



Class leading components and a wealth of advanced features

This range of welders is the serious choice for TIG welding and will weld almost any metal.

- HF micro start enables easy arc ignition and prevents HF from causing interference with other localized electronic equipment. This is a feature normally only found on more expensive machines.
- Features DC mode for steels and AC mode for alloys. Both models also feature MMA (arc) welding functionality too.
- Foot pedals give you the ultimate in smooth power delivery and control. Weld from minimum amps up to any pre-set maximum of your choice. Ideal for intricate or complicated welds.
- Fully featured pulse welding enables the adjustment of pulse width, amperage and frequency, thus reducing heat deformation and providing greater control of the weld pool. Ideal for stainless steel applications.
- Adjustable AC frequency between 20 to 250Hz this allows for quicker travel speed, improved penetration and provides a narrower weld bead. This feature is normally only found on more expensive TIG welders.
- Perfect for fabrication, aerospace, automotive industry, maintenance, marine applications, restoration and more.

Optional TIG Welder Accessories Available



Water Cooler

This model features a 7 litre tank and a large heat exchanger allowing cooling up to 600 Amps.



Standard Trolley

Made for our R-Tech Welders & Plasma Cutters, this trolley has two good sized trays.



SSC Remote Pedal

USA made professional remote pedal with low profile for extra comfort. Fits all R-Tech TIG Welders.





SKU: TIG161

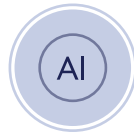
160amp AC/DC TIG Welder 240V



5mm Max Weld



Welds Steel



Welds Aluminium

WHAT'S IN THE BOX?

Our complete package includes a 4m air cooled WP26 torch, earth lead, MMA lead, gas hose, mains cable, regulator, owners manual and a torch consumables kit.

TECHNICAL SPECIFICATIONS

TIG output @ 35% duty cycle	160amps
AC TIG output	20-160amps
DC TIG output	10-160amps
MMA output	10-120amps
AC squarewave balance control	Yes (30-70%)
AC squarewave frequency control	50-250Hz
High frequency micro start	Yes
Generator friendly recommended size	5kVA
Slope up/slope down	0-5 seconds
Gas post-flow	1-25 seconds
Pulse current range	5-160amps
Pulse width range	0.1-0.9 seconds
Pulse frequency range	0.5-25Hz
2T/4T trigger operation (trigger latching)	Yes
LED amperage display - pre-set & actual	Yes
Cooling fan with quiet DC fan system	Yes
MMA hot start	Yes
240V auxiliary output for water cooler, etc.	Yes
Net weight	25kg
Dimensions (mm)	515x220x395

TIG TORCH OPTIONS	LENGTH	RATING
WP18 water cooled	4m & 8m	350A DC - 250A AC
WP20 water cooled	4m & 8m	250A DC - 175A AC
WP26 air cooled	8m	200A DC - 150A AC



SKU: TIG201

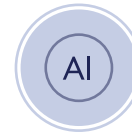
200amp AC/DC TIG Welder 240V



7mm Max Weld



Welds Steel



Welds Aluminium

WHAT'S IN THE BOX?

Our complete package includes a 4m air cooled WP26 torch, earth lead, MMA lead, gas hose, mains cable, regulator, owners manual and a torch consumables kit.

TECHNICAL SPECIFICATIONS

TIG output @ 60% duty cycle	200amps
AC TIG output	20-200amps
DC TIG output	5-200amps
MMA output	10-160amps
AC squarewave balance control	Yes (30-70%)
AC squarewave frequency control	50-250Hz
High frequency micro start	Yes
Generator friendly recommended size	6.5kVA
Slope up/slope down	0-5 seconds
Gas post-flow	1-25 seconds
Pulse current range	5-200amps
Pulse width range	0.1-0.9 seconds
Pulse frequency range	0.5-25Hz
2T/4T trigger operation (trigger latching)	Yes
LED amperage display - pre-set & actual	Yes
Cooling fan - fan on demand	Yes
MMA hot start	Yes
240v auxiliary output for water cooler, etc...	Yes
Net weight	29kg
Dimensions (mm)	515x220x395

TIG TORCH OPTIONS	LENGTH	RATING
WP18 water cooled	4m & 8m	350A DC - 250A AC
WP20 water cooled	4m & 8m	250A DC - 175A AC
WP26 air cooled	8m	200A DC - 150A AC